

Super switch in Coventry

Almeida, Convery trade positions at top of Coventry schools; move made September 13

KENDRA LEIGH MILLER
kmliller@ricentral.com

COVENTRY – Effective September 13, Coventry School Superintendent Michael Convery stepped down from his role as Superintendent after three years and will be taking on the role of Assistant School Superintendent formerly held by Dr. Michael Almeida, who will assume Convery's position.

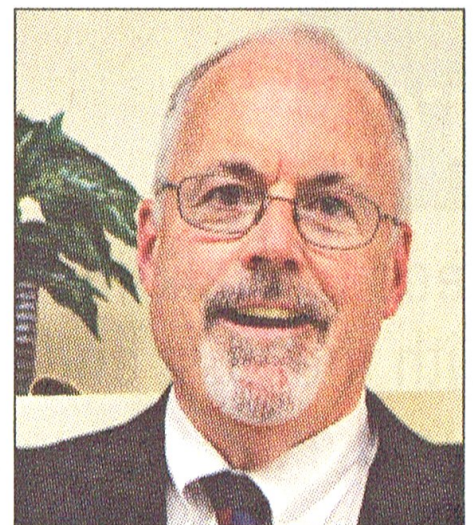
Convery was appointed to the position in 2010 after serving as assistant superintendent and prior to that principal of Alan Shawn Feinstein Middle School. Although he is stepping down from his position, he is not leaving the district.

"I'm stepping down for personal reasons," said Convery. "As of this time, our roles have not been



Almeida

clearly defined; however, I'm delighted to still be working with the same team of professionals. The workload is intense and everyone is aware of their responsibilities and works to fulfill them."



Convery

Almeida, who was promoted to assistant superintendent July 19, has worked within the Coventry School District for five years, and before his promotion this summer

See SWITCH, Page A-2

Switch at top of school department

Continued from Page A-1

served as the Principal of Feinstein.

He is looking forward to stepping up in his newest role of Superintendent.

"I will be the first to tell you I have a lot to learn in my new role," said Almeida. "I am grateful to have Mike as my mentor and guide me as we establish vision and direction. Our vision consists of five adjectives; be strategic, be professional, be collaborative, be supportive and be reflective."

The Superintendent's role is the Chief Executive Officer (CEO) of the District. He is responsible for the effective operation of the District; general administration of all instructional, business or other

operations of the District; and for advising and making recommendations to the Board of Education with respect to such activities.

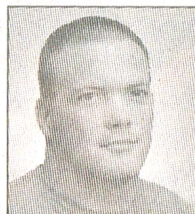
An Assistant Superintendent is generally expected to imple-

ment local policy, state regulations and federal legislation, and help teachers and principals employ practices which guarantee high student achievement.

Their functions of their role

include: creating and committing a vision for change; building others' capacity; promoting collaboration; coordinating initiatives; and building and maintaining relationships in the district.

MEET THE STAFF



**JEREMIAH
RYAN**
NEWS EDITOR

Jeremiah joined



**JESSICA
BOISCLAIR**
REPORTER

Jessica is a 2011



**KENDRA LEIGH
MILLER**
REPORTER

Kendra recently



**BRANDEN
MELLO**
SPORTS

A 2004 graduate of